

IOWA STATE UNIVERSITY

Human Development and Family Studies

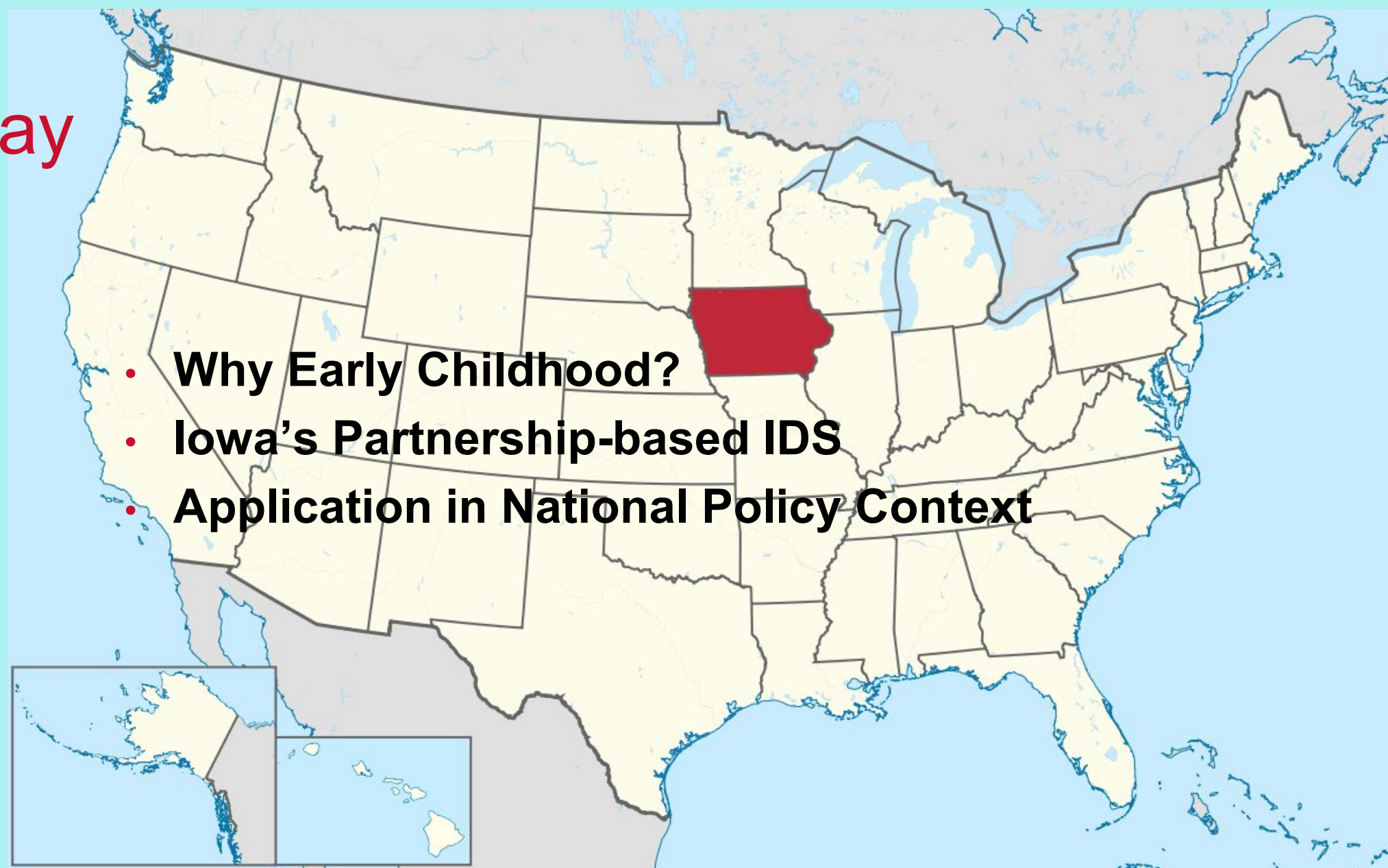
Iowa's Integrated Data System: A State-University Partnership in Early Childhood Policy Analysis

Heather L. Rouse & Cassandra J. Dorius

May 10, 2019

National Academy of Sciences Committee on National Statistics

Today



- **Why Early Childhood?**
- **Iowa's Partnership-based IDS**
- **Application in National Policy Context**

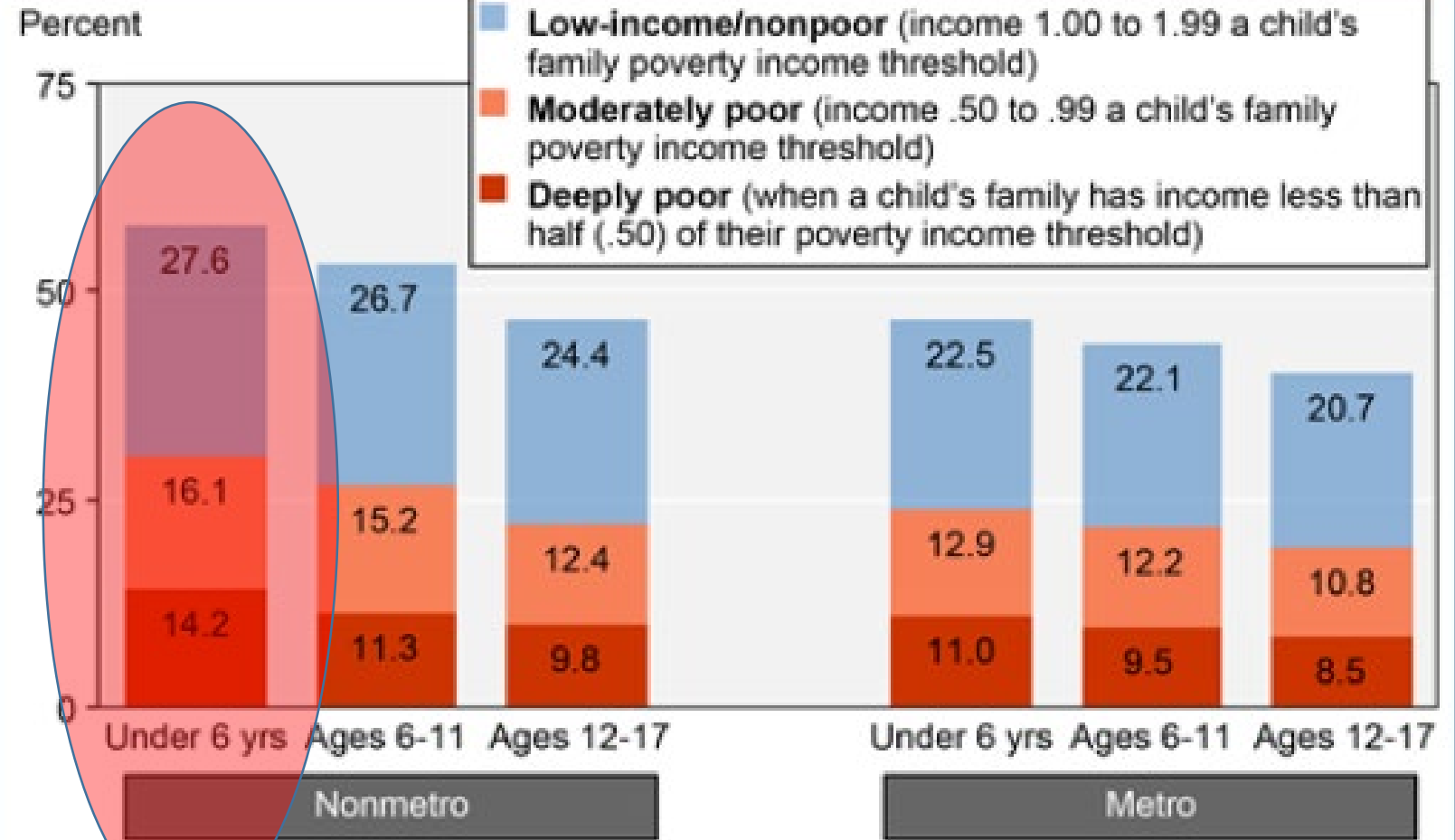


Poverty is the single greatest threat to a child's wellbeing.

- Increased social, emotional, and behavioral problems
- Poorer mental and physical health
- Difficulties learning

Young, rural children are the most vulnerable

Children by age, poverty status, and metro/nonmetro residence, 2013



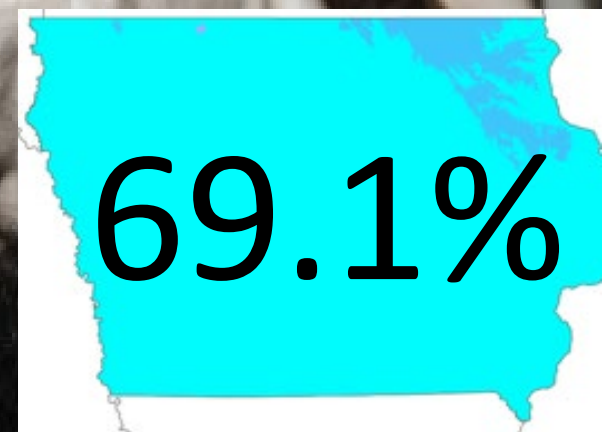
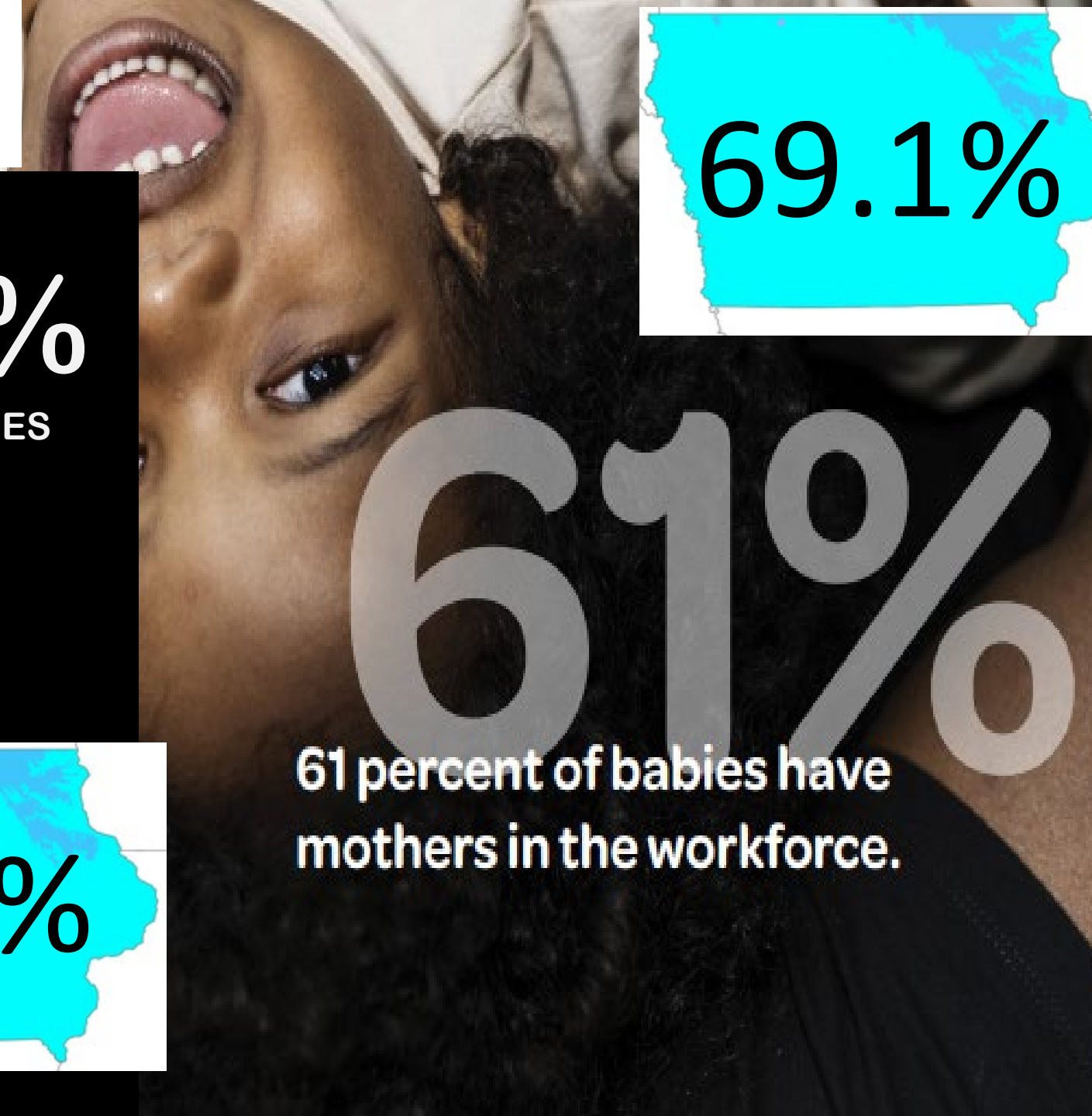
Note: Children are defined as all persons under 18 years old. Nonmetro/metro status is based on 2013 Office of Management and Budget designations.

Source: USDA, Economic Research Service using data from U.S. Census Bureau, American Community Survey, 2013.



8.5%

2 or more ACES



61%

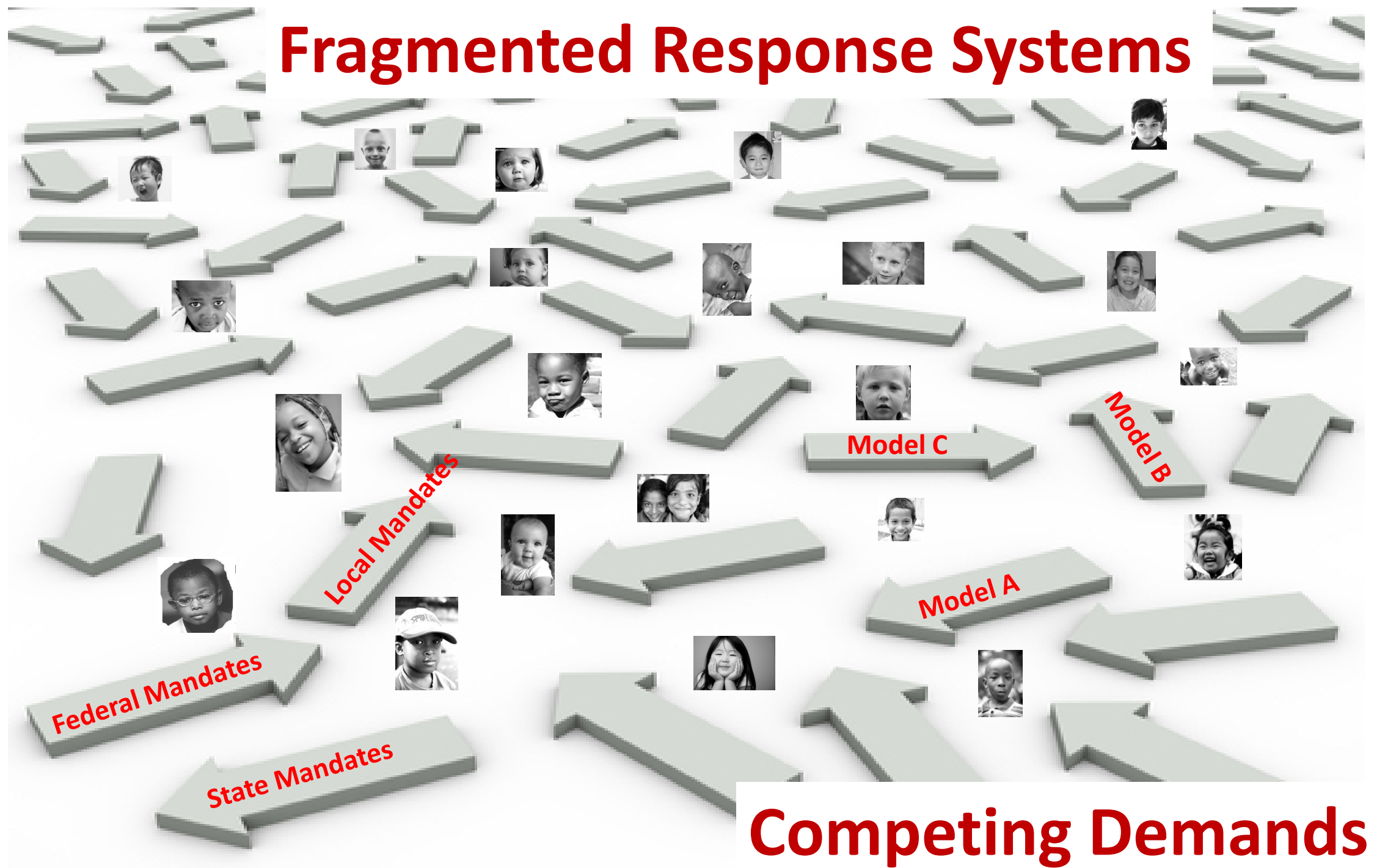
61 percent of babies have mothers in the workforce.

Rural Challenges

- **Lower educated mothers**
- **More nonstandard work hours**
- **Less access to comprehensive service systems**



Fragmented Response Systems



Competing Demands

Are our Programs

reaching

What happens

AFTER

vulnerable

children leave

our services –

a

We see some families

r

that are eligible for

How many

services, but they don't

we serve

access them why not?

programs



IOWA'S VISION:

Every child, beginning at birth, will be healthy & successful.

Desired Results:

“empower the **creation of collaborations** to support children 0-5 through a primary focus on working together to improve efficiency & effectiveness”
(Iowa Code 256i.2)



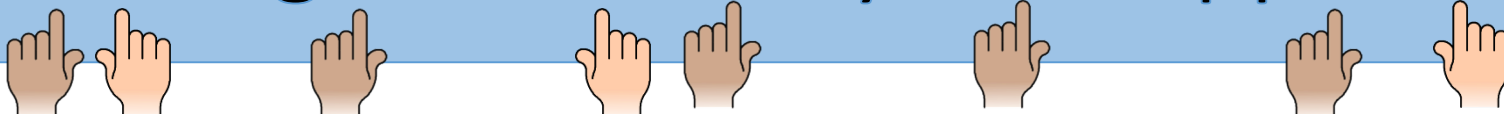
IOWA'S VISION:

Every child, beginning at birth, will be healthy & successful.

ECI Strategic Plan:

- Effective communication & coordination among multiple systems
- A systems-informed approach to policy & programming
- Evidence-based services that reflect good stewardship of public investments

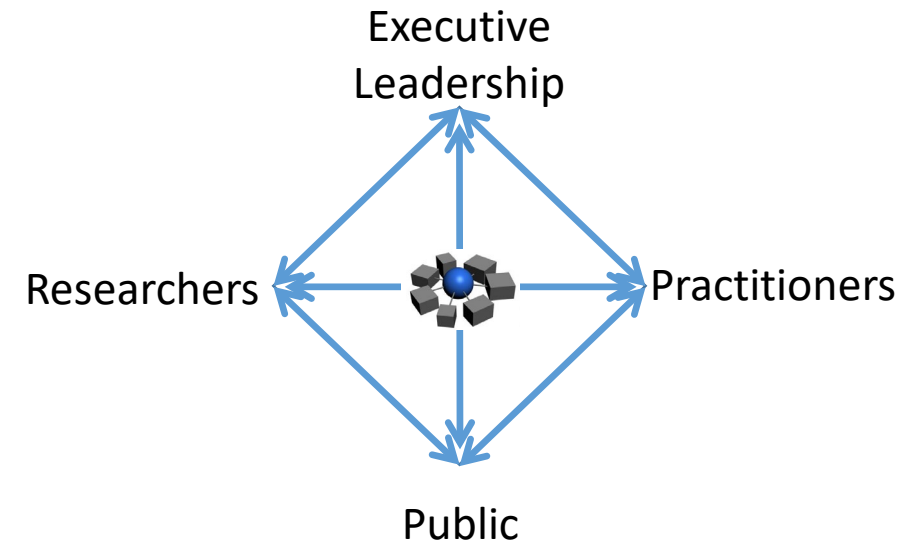
An Integrated Data System Approach



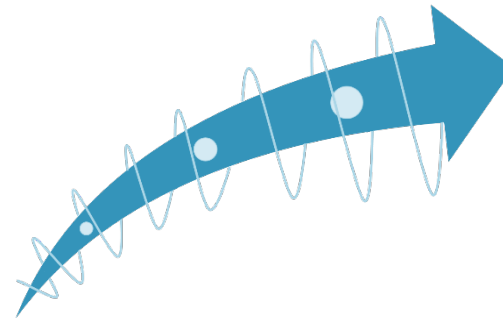
Simultaneous Development Approach:

IDS governance structure to ensure ETHICAL USE

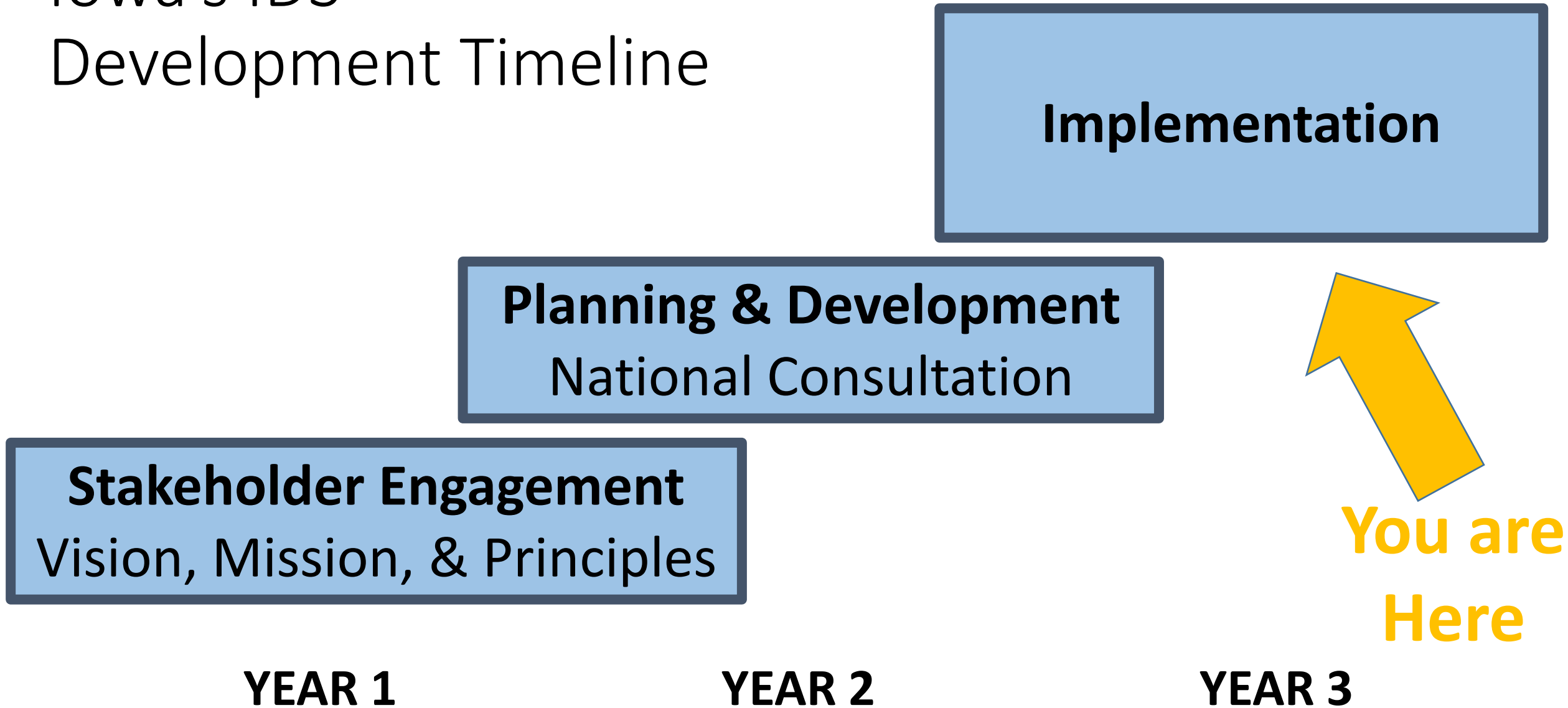
- State maintains control
- High standards for PRIVACY & SCIENCE
- Strategic communication and participation to ensure analytics are USED to meet ECI mission



Demonstration(s) of IDS Capacity



Iowa's IDS Development Timeline



State-University Partnership Model

- State maintains control of the “use” of data
- University staffs the infrastructure with a flexible capacity to expand or contract depending on IDS project demands
- Capitalizes on ISU’s land-grant mission and expertise in data management, analytics, security
- Neutral “3rd Party” approach for data integration that meets federal and state legal requirements
- Political & economic sustainability



Prioritized Data Systems

*



Department of Public Health:

Vital Records (Birth/death/marriage)

Infant Screening System

Home Visiting (DAISEY)

Lead Registry

Maternal/Child Health (TavHEALTH)

Department of Education:

Prek-12 (enroll, achieve, attend)

Preschool assessment

Special Education (IDEA A, B, & C)

Department of Human Services:

Child Care Subsidies

Child Welfare

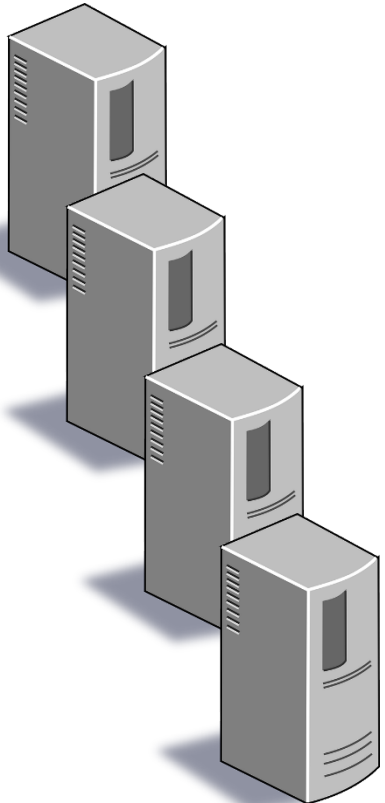
Child Support Recovery

Income Maintenance/Eligibility

SNAP

TANF

FaDSS (2 Gen program)



Phase I Incorporation

*



Department of Public Health:

Vital Records (Birth/death/marriage)

Infant Screening System

Home Visiting (DAISEY)

Lead Registry

Maternal/Child Health (TavHEALTH)

Department of Human Services:

Child Care Subsidies

Child Welfare

Child Support Recovery

Income Maintenance/Eligibility

SNAP

TANF

FaDSS (2 Gen program)

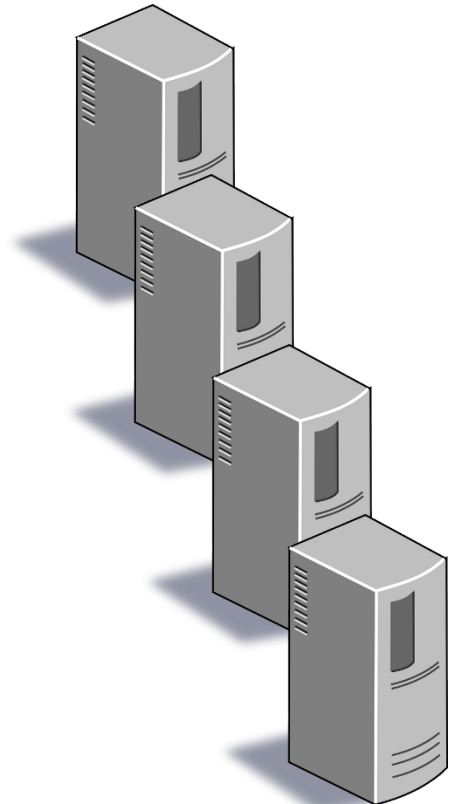
Department of Education:

Prek-12 (enroll, achieve, attend)

Preschool assessment

Special Education (IDEA A, B, & C)

*Head Start

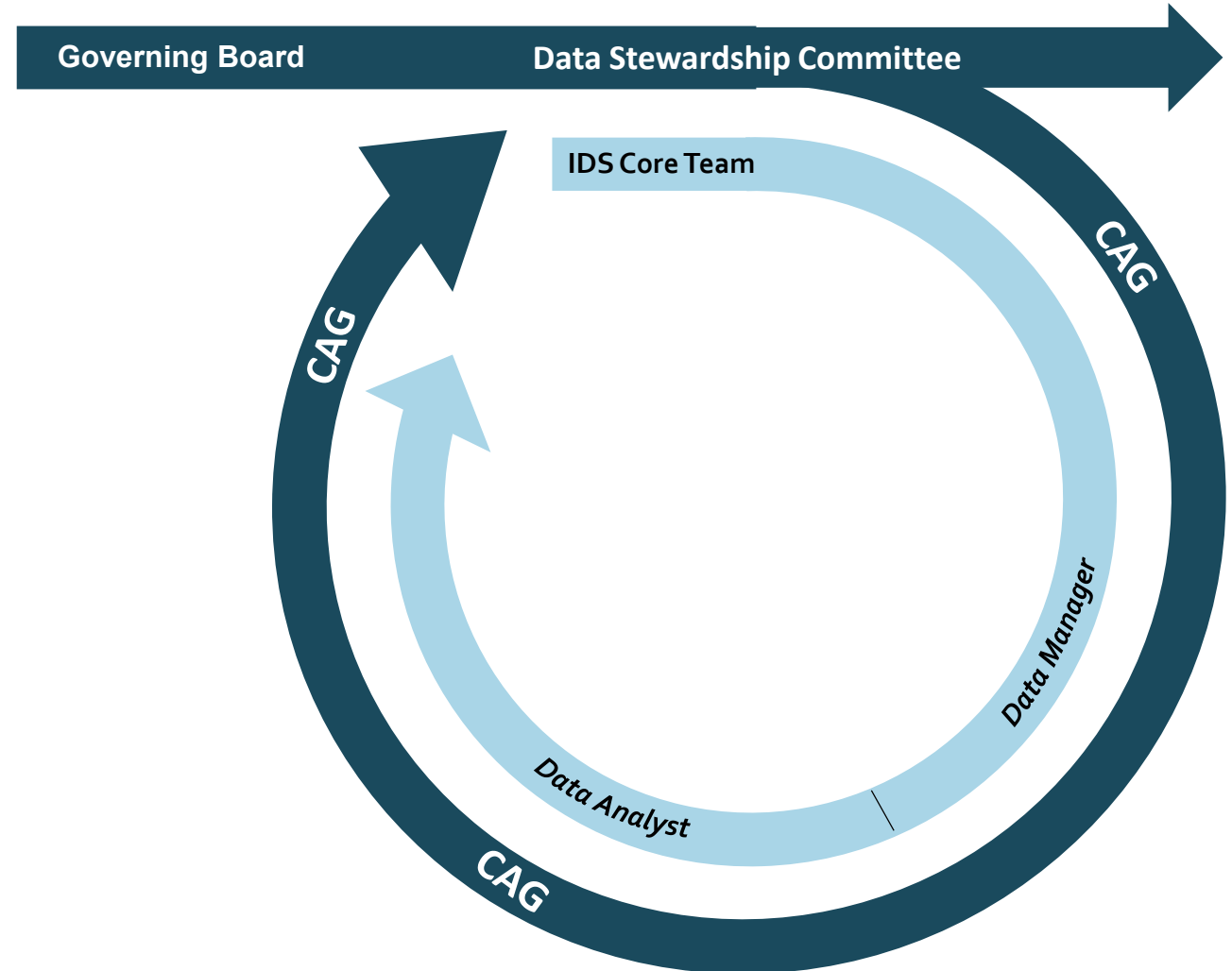
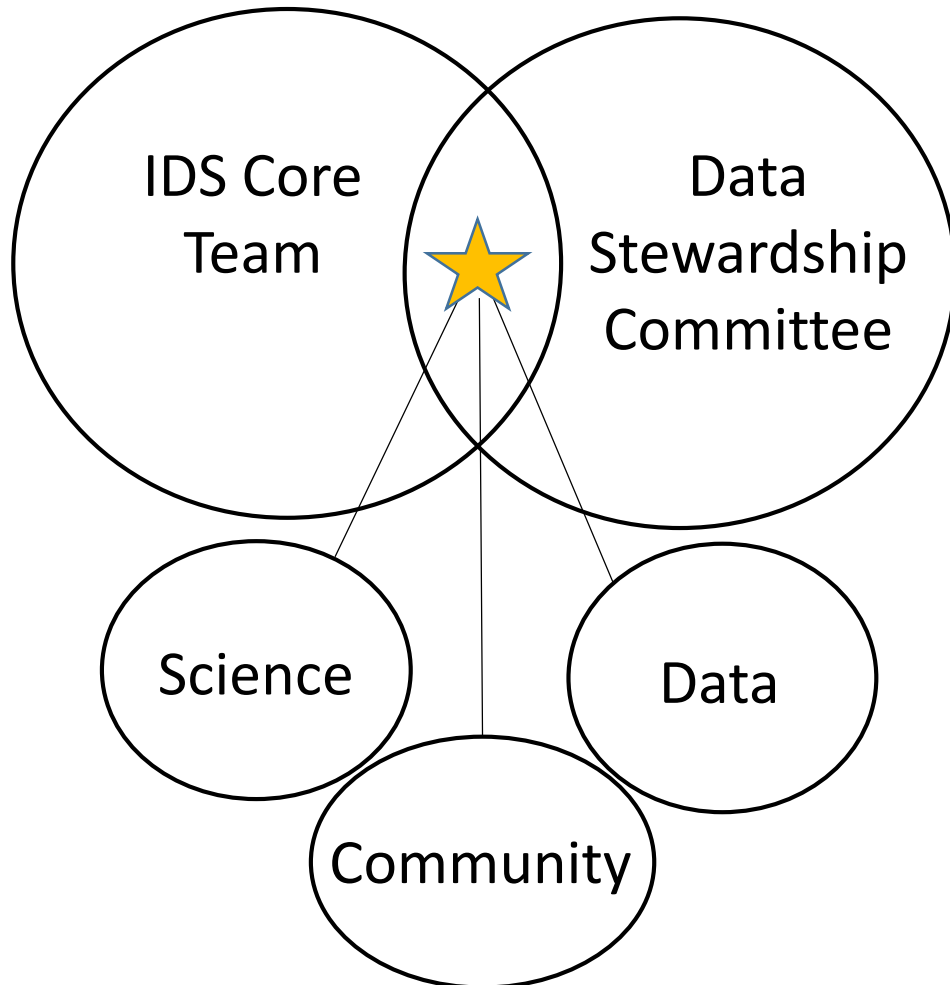


IDS Governance: People & Processes



IDS Governance: People & Processes

Governing Board “Executive Leadership”



Iowa's Preschool Development Grant

“IDS Demonstration”



Policy-Driven IDS Analytic Questions:

- Who are the children participating in our programs, and how do these **characteristics** differ for children NOT participating?
- What are the **unduplicated counts** of children across B-5 programs?
- Who are our **underserved populations**, including those vulnerable children who are eligible but are not participating in our programs and children living in rural areas?
- How does program participation relate to **kindergarten outcomes** including literacy, attendance, and behavior?
- Where are the **gaps in quality services** for vulnerable and underserved children?



Step 1: Baseline Characteristics

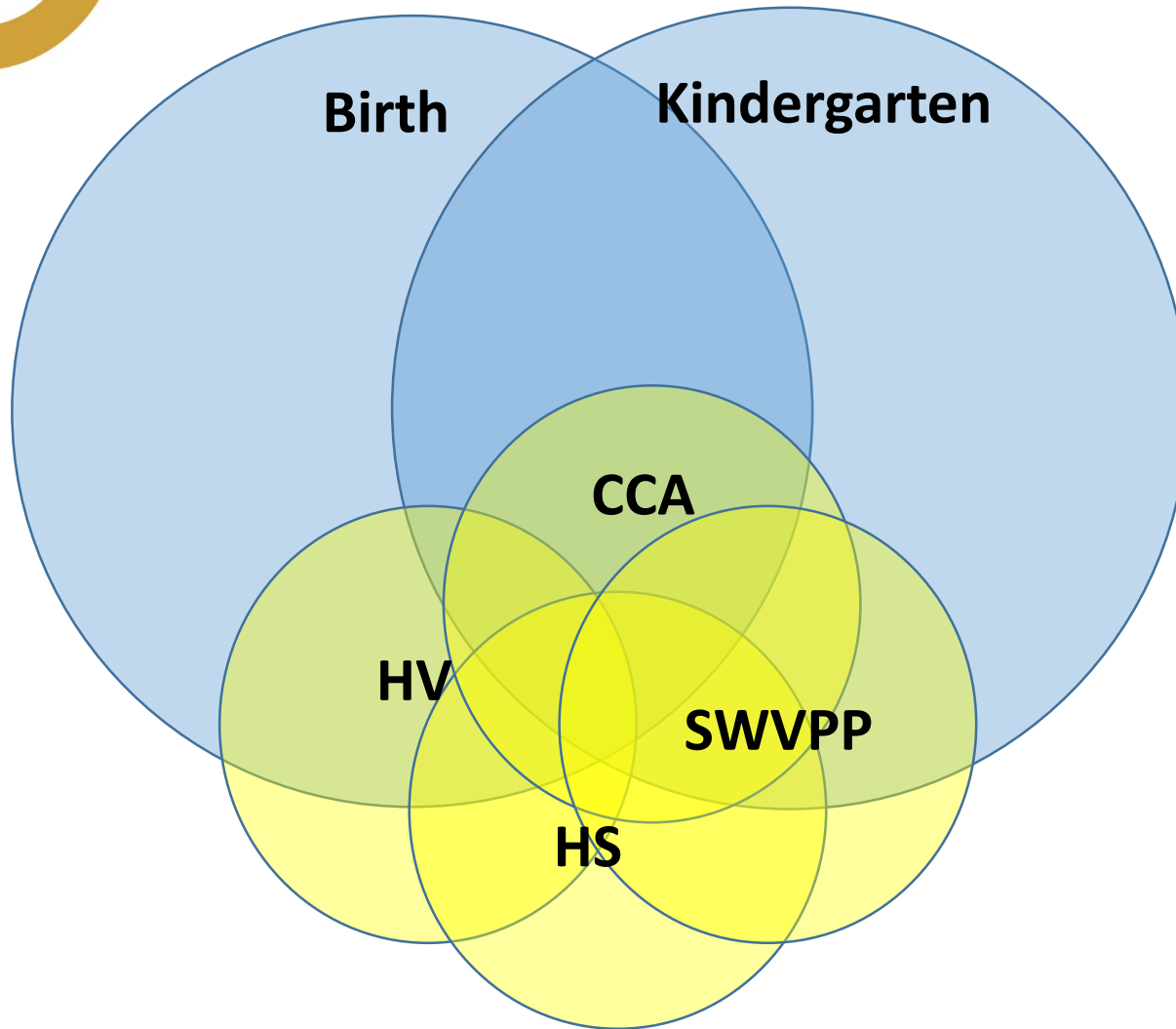
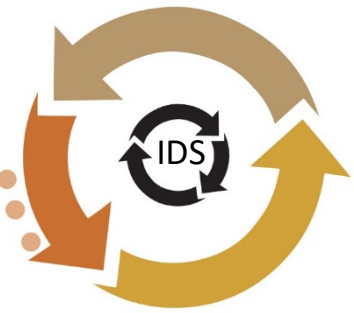
IDPH Birth Records:

Child demographics (gender, race, birth order)
Low birthweight
Preterm birth
Inadequate prenatal care
Low maternal education (<12y)
Birth to teen mother
Birth to single mother
Poverty

Department of Education:

Child demographics (age, gender, race/eth)
Free/reduced price lunch status
ELL status
Kindergarten enrollment (location & dates)
Kindergarten attendance rate
Kindergarten literacy assessment

Step 2: Enrollment Patterns



State-funded Education

Universal Pre-K program

Targeted low-income Pre-K program

IDEA Parts B & C

Early Head Start/Head Start:

Enrollment

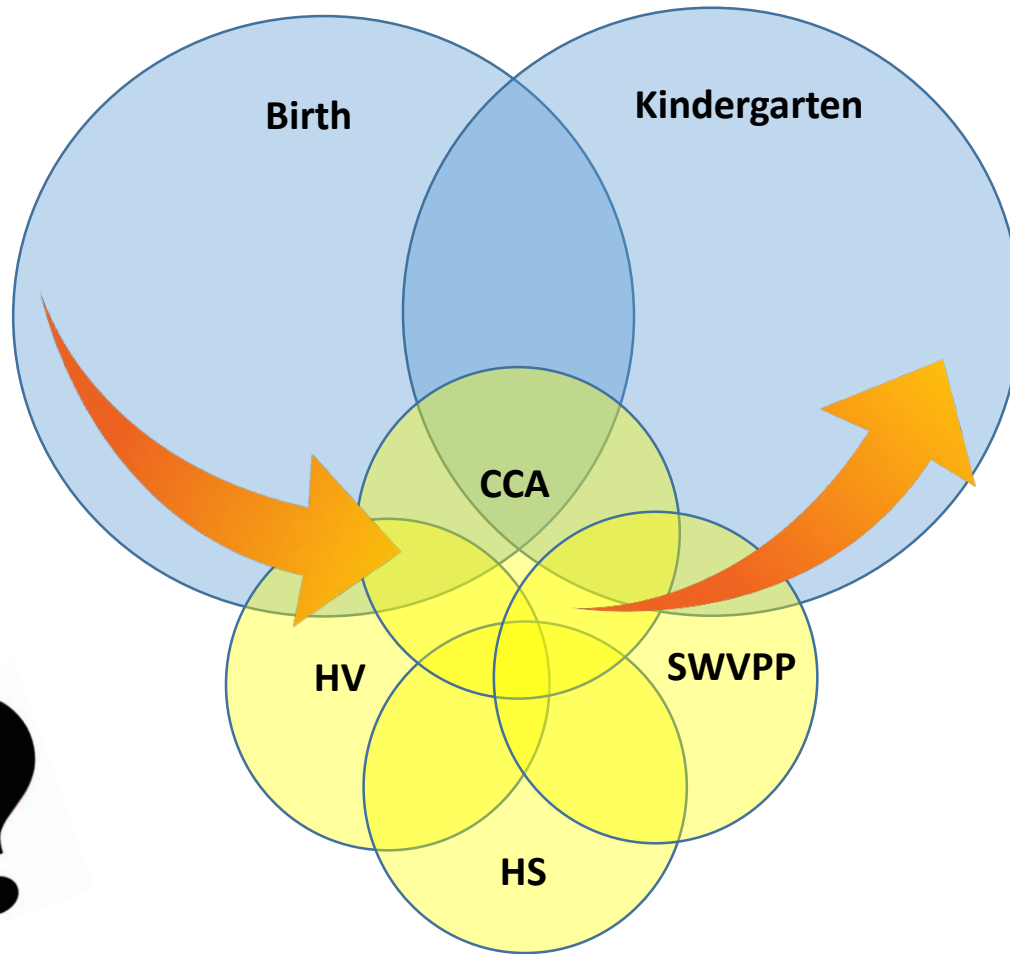
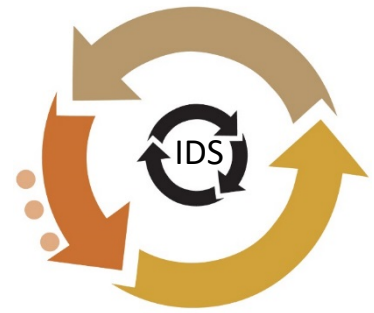
Child Care Subsidy:

Eligibility & receipt

Home Visiting

Enrollment, duration, type

Step 3: Gaps Analysis



Who are we missing?

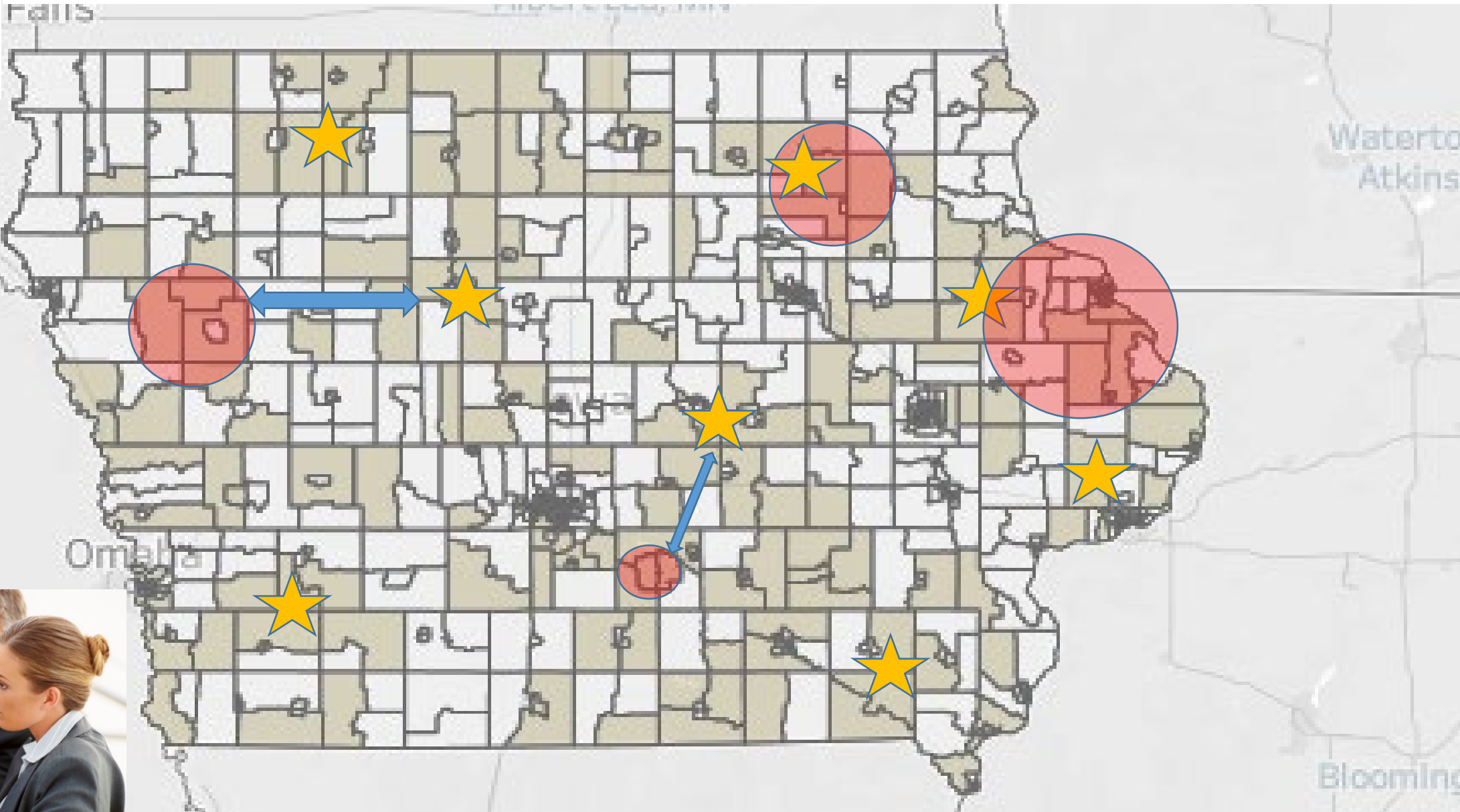
Transitions between programs?

Outcomes?

Program quality?

Risk Patterns?

Step 4: Strategic Planning



**BUILD IT,
USE IT,
IMPROVE IT**



Precision

“Me”

Now

Speed

“We”

Later



Reaching our Target



- ✓ Foster **SUSTAINABILITY through partnerships**
- ✓ Support **national network of IDS** focused in early childhood – partnership approach to PDG renewal
- ✓ Build **relevant indicators** that can be replicated, shared, & monitored nationally

Thank You

Heather Rouse Hrouse@iastate.edu

Cassandra Dorius Cdorius@iastate.edu



Integrated Data System (IDS) Taskforce: Jeff Anderson (DOM), Tammi Christ (DHS), Kelly Davydov (DHR), Cassandra Dorius (ISU), Marion Kresse (BooST, ECI-RA co-chair), Ryan Page (DHS), Tom Rendon (DOE), Betsy Richey (DPH), Heather Rouse (ISU), Amanda Winslow (DOE/DOM)